

# HEALTH HOLIDAY CALENDAR 2024



Prepared By:



A bilingual 24/7 on-demand virtual health fair, based in Boston, Massachusetts, that connects both English and Spanish-speaking audiences to healthcare organizations.

**MYHEALTHFAIR.COM**



## What is My Health Fair?

A 365 days a year digital health fair that gives you access to information directly from health organizations and experts, in your language.

# 2024 JANUARY

SUN	MON	TUE	WED	THU	FRI	SAT
	1	2	3	4	5	6
7	8	9	10	11	12	13
14	15	16	17	18	19	20
21	22	23	24	25	26	27
28	29	30	31	1	2	3



- 12** National Pharmacist Day
- 18** Women's Healthy Weight Day
- 22** Celebration of Life Day
- 23** Maternal Health Awareness Day
- 28** World Leprosy Day



### WEEK-LONG OBSERVANCES

- 21-27 Healthy Weight Week
- 22-26 Medical Group Practice Week
- 23-29 National CRNA Week

### MONTH-LONG OBSERVANCES

- Birth Defects Prevention Month (National)
- Blood Donor Month (National)
- Cervical Health Awareness Month
- Glaucoma Awareness Month
- Thyroid Awareness Month



## What we do?

We connect both English and Spanish-speaking audiences to healthcare organizations.

# 2024 FEBRUARY

SUN	MON	TUE	WED	THU	FRI	SAT
				1	2	3
4	5	6	7	8	9	10
11	12	13	14	15	16	17
18	19	20	21	22	23	24
25	26	27	28	29	1	2



- 02** National Wear Red Day
- 04** World Cancer Day
- 14** Organ Donor Day
- 16** Caregivers Day
- 29** Rare Disease Day

## WEEK-LONG OBSERVANCES

- 6-12 Children's Mental Health Awareness Week
- 7-14 Congenital Heart Defect Awareness Week
- 11-17 Cardiovascular Professionals Week
- 12-18 Cardiac Rehabilitation Week
- 28-1 National Eating Disorder Awareness Week

## MONTH-LONG OBSERVANCES

- Recreational Therapy Month
- Children's Dental Health Month
- Age-Related Macular Degeneration
- National Cancer Prevention
- Kids ENT Health Month
- American Heart Month







## Our mission

Overcome language barriers and low health literacy among at-risk and hard-to-reach populations in Massachusetts.

# 2024 MARCH

SUN	MON	TUE	WED	THU	FRI	SAT
					1	2
3	4	5	6	7	8	9
10	11	12	13	14	15	16
17	18	19	20	21	22	23
24	25	26	27	28	29	30
31	1	2	3	4	5	6



## WEEK-LONG OBSERVANCES

- 12-18 Patient Safety Awareness Week
- 12-18 Pulmonary Rehabilitation Week
- 15-19 Healthcare HR Professionals Week

## MONTH-LONG OBSERVANCES

- Women's History Month
- Brain Injury Awareness Month
- American Red Cross Month
- Colorectal Cancer Awareness Month
- National Kidney Month
- National Nutrition Month

- 01 Dress in Blue Day (Colon Cancer)
- 06 Dentist's Day
- 08 International Women's Day
- 10 Women and Girls (HIV/AIDS Awareness Day)
- 15 World Sleep Day
- 21 World Down Syndrome Day
- 24 World Tuberculosis Day
- 26 Epilepsy Awareness Day
- 30 National Doctors' Day







## Our vision

A virtual health fair providing health information and resources to underprivileged communities with organizations and health service institutions.

# 2024 APRIL

SUN	MON	TUE	WED	THU	FRI	SAT
	1	2	3	4	5	6
7	8	9	10	11	12	13
14	15	16	17	18	19	20
21	22	23	24	25	26	27
28	29	30	1	2	3	4



## WEEK-LONG OBSERVANCES

- 1-7 Public Health Week
- 18-24 Health Information Professionals Week
- 21-27 National Volunteer Week
- 21-27 Infertility Awareness Week
- 21-27 Medical Laboratory Professionals Week
- 29-3 Patient Experience Week

- 02 World Autism Awareness Day
- 07 World Health Day
- 17 World Hemophilia Day
- 25 World Malaria Day
- 28 World Day For Safety & Health At Work

## MONTH-LONG OBSERVANCES

- Autism Awareness Month
- Parkinson's Awareness Month
- Foot Health Awareness Month
- Esophageal Cancer Awareness Month
- Head and Neck Cancer Awareness Month
- Stress Awareness Month
- Testicular Cancer Awareness Month





## Our purpose

Overcoming language barriers and low literacy in health services in vulnerable and hard-to-reach populations.

# 2024 MAY

SUN	MON	TUE	WED	THU	FRI	SAT
			1	2	3	4
5	6	7	8	9	10	11
12	13	14	15	16	17	18
19	20	21	22	23	24	25
26	27	28	29	30	31	1



### WEEK-LONG OBSERVANCES

- 12-18 National Nurses Week
- 12-18 National Hospital Week
- 14-20 Women's Health Week
- 19-25 Emergency Medical Services Week

### MONTH-LONG OBSERVANCES

- PTSD Awareness Month
- Asthma & Allergy Awareness Month
- Hepatitis Awareness Month
- Skin Cancer Awareness Month
- Glaucoma Awareness Month
- ALS Awareness Month

- 06 National Nurses Day
- 07 World Asthma Day
- 08 World Ovarian Cancer Day
- 12 Chronic Fatigue Syndrome Day
- 12 International Nurses Day
- 12 National Fibromyalgia Awareness Day
- 17 World Hypertension Day
- 22 Emergency Medical Services For Children Day
- 29 Senior Health and Fitness Day





## Today My Health Fair

projects itself as an inclusive information source, serving as a meeting point between the community and health care providers

# 2024 JUNE

SUN	MON	TUE	WED	THU	FRI	SAT
						1
2	3	4	5	6	7	8
9	10	11	12	13	14	15
16	17	18	19	20	21	22
23	24	25	26	27	28	29
30	1	2	3	4	5	6



- 14** World Blood Donor Day
- 08** World Brain Tumor Day
- 18** Autistic Pride Day
- 27** PTSD Awareness Day

### WEEK-LONG OBSERVANCES

- 10-16 Men's Health Week
- 13-19 National Nursing Assistants Week
- 19-23 Healthcare Risk Management Week

### MONTH-LONG OBSERVANCES

- Cataract Awareness Month
- Men's Health Month
- Migraine and Headache Awareness Month
- LGBTQ Pride Month
- Scleroderma Awareness Month
- Vitiligo Awareness Month
- National PTSD Awareness Month







## El Mundo Boston

We have a greater reach because My Health Fair permanently has a space through a publication, video, or Partnership with El Mundo Media.

# 2024 JULY

SUN	MON	TUE	WED	THU	FRI	SAT
	1	2	3	4	5	6
7	8	9	10	11	12	13
14	15	16	17	18	19	20
21	22	23	24	25	26	27
28	29	30	31	1	2	3



**24** International Self-Care Day

**28** World Hepatitis Day

### WEEK-LONG OBSERVANCES

- 1- 7 World Breastfeeding Week
- 4-10 National Health Center Week
- 5-11 OSHA's Safe and Sound Week
- 18-24 Contact Lens Health Week

### MONTH-LONG OBSERVANCES

- UV
- Juvenile Arthritis Awareness Month
- International Sarcoma Awareness Month





## Our Vendors

We currently have 10 vendors who through their tables, information and services raise disease awareness, facilitate, and ensure access to local community services in their own language.

# 2024 AUGUST

SUN	MON	TUE	WED	THU	FRI	SAT
				1	2	3
4	5	6	7	8	9	10
11	12	13	14	15	16	17
18	19	20	21	22	23	24
25	26	27	28	29	30	31



- 01** World Lung Cancer Day
- 19** World Humanitarian Day
- 31** International Overdose Awareness Day

## MONTH-LONG OBSERVANCES

- Children's Eye Health and Safety Month
- Digestive Tract Paralysis Awareness Month
- Gastroparesis Awareness Month
- National Breastfeeding Month
- National Immunization Awareness Month
- Psoriasis Action Month





## Join us

We want more organizations to join us by participating in a virtual table at My Health Fair to showcase their programs in language and in culture.

# 2024 SEPTEMBER

SUN	MON	TUE	WED	THU	FRI	SAT
1	2	3	4	5	6	7
8	9	10	11	12	13	14
15	16	17	18	19	20	21
22	23	24	25	26	27	28
29	30	1	2	3	4	5



## WEEK-LONG OBSERVANCES

- 8-14 Nephrology Nurses Week
- 10-16 Rheumatoid Arthritis Awareness Week
- 16-20 National Rehabilitation Awareness Week
- 16-20 Surgical Technologist Week
- 18-22 Nursing Professional Development

## MONTH-LONG OBSERVANCES

- Leukemia Awareness Month
- Childhood Cancer Awareness Month
- Gynecologic Cancer Awareness Month
- Prostate Health Month
- Lymphoma Awareness Month
- Alopecia Areata Awareness Month
- PAD Awareness Month

- 08 National Pediatric Hematology Oncology Nurses Day
- 10 World Suicide Prevention Day
- 13 National Celiac Disease Awareness Day
- 18 National HIV/AIDS and Aging Awareness Day
- 21 World Alzheimer's Day
- 29 World Heart Day







## About us

This is a health fair where the participants are the main health organizations and social service providers.

# 2024 OCTOBER

SUN	MON	TUE	WED	THU	FRI	SAT
		1	2	3	4	5
6	7	8	9	10	11	12
13	14	15	16	17	18	19
20	21	22	23	24	25	26
27	28	29	30	31	1	2



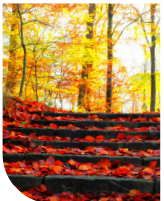
- 10** World Mental Health Day
- 12** World Arthritis Day
- 18** National Mammography Day
- 19** World Pediatric Bone and Joint Day
- 20** World Osteoporosis Day

## WEEK-LONG OBSERVANCES

- 6-12 Mental Illness Awareness Week
- 16-20 Medical Assistants Recognition Week
- 18-21 National Orthopaedic Nurses Week
- 20-26 International Infection Prevention Week
- 20-26 National Healthcare Quality Week

## MONTH-LONG OBSERVANCES

- Breast Cancer Awareness Month
- Chiropractic Care Month
- Eczema Awareness Month
- Pregnancy & Child Loss Month
- Physical Therapy Month



**Happy Thanksgiving!**  
Warmest Thanksgiving greetings to you and your family.

# 2024 NOVEMBER

SUN	MON	TUE	WED	THU	FRI	SAT
					1	2
3	4	5	6	7	8	9
10	11	12	13	14	15	16
17	18	19	20	21	22	23
24	25	26	27	28	29	30



**14** World Diabetes Day

### WEEK-LONG OBSERVANCES

- 6-12 Medical Staff Services Awareness Week
- 7-12 Allied Health Professions Week
- 10-16 National Nurse Practitioner Week

### MONTH-LONG OBSERVANCES

- Alzheimer's Awareness Month
- Diabetic Eye Disease Month
- Healthy Skin Month
- Lung Cancer Awareness Month
- Pancreatic Cancer Awareness Month





## Happy holidays!

Hoping for peace and joy this holiday season. Wishing you much happiness and prosperity in the year ahead.

# 2024 DECEMBER

SUN	MON	TUE	WED	THU	FRI	SAT
1	2	3	4	5	6	7
8	9	10	11	12	13	14
15	16	17	18	19	20	21
22	23	24	25	26	27	28
29	30	31	1	2	3	4



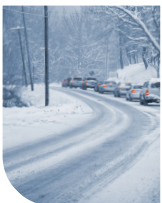
- 01** World AIDS Day
- 03** International Day of Persons with Disabilities

### WEEK-LONG OBSERVANCES

- 2-6 National Handwashing Awareness Week

### MONTH-LONG OBSERVANCES

- Drunk and Drugged Driving Prevention Month
- International AIDS Awareness Month
- Safe Toys and Gifts Awareness Month







Share our bilingual resources with the community.

**DOWNLOAD OUR**

# PROMOTIONAL TOOLKIT

Help us spread the word!

